



Moving Towards 2050

Shifting transportation behaviors, a discussion about electrification

Presented by / Présentée par

Reli^{ON}N

Land Acknowledgement

We acknowledge that the land in which we gather today is the traditional unceded and unsurrendered territory of the Wəlastəkwiyyik/Wolastoqiyik (WOOL-ah-sto-gway) Peoples. This territory is covered by the “Treaties of Peace and Friendship” which Wəlastəkwiyyik, Mi’kmaq and Passamaquoddy Peoples first signed with the British Crown in 1725. The Treaties did not deal with surrender of lands or resources but in fact recognized Mi’kmaq and Wəlastəkwiyyik title and established the rules for what was to be an ongoing relationship between equal nations.



Benoit Lacroix

CEO

ReliON



Ashley Smith

Managing Director

Fundamental Inc.



Donna Reardon

Mayor

Saint John, NB



ReliON

Powering electric mobility with infrastructure we can rely on.

FCM's Sustainable Communities Conference 2025
Moving towards 2050: Shifting transportation behaviours
February 11th, 2025

About myself



Benoit Lacroix
Eng., Ph.D.

20-yr in electric
& smart mobility

effenco[®]

Truck Electrification
Co-founder & VP - 15 yrs
Canada, US, Europe

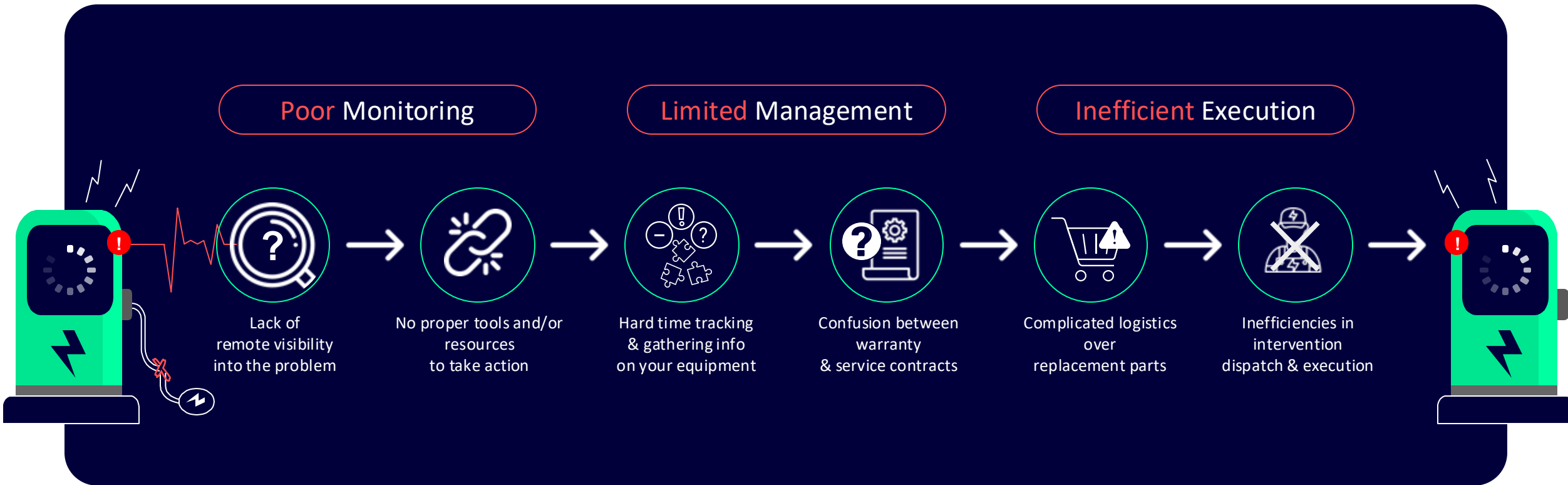
astus

Fleet telematics
CEO - 2 yrs

Waste Management - Veolia - Maersk
Dubai Port World - City of New York
Derichebourg - Renaud - Mack Trucks

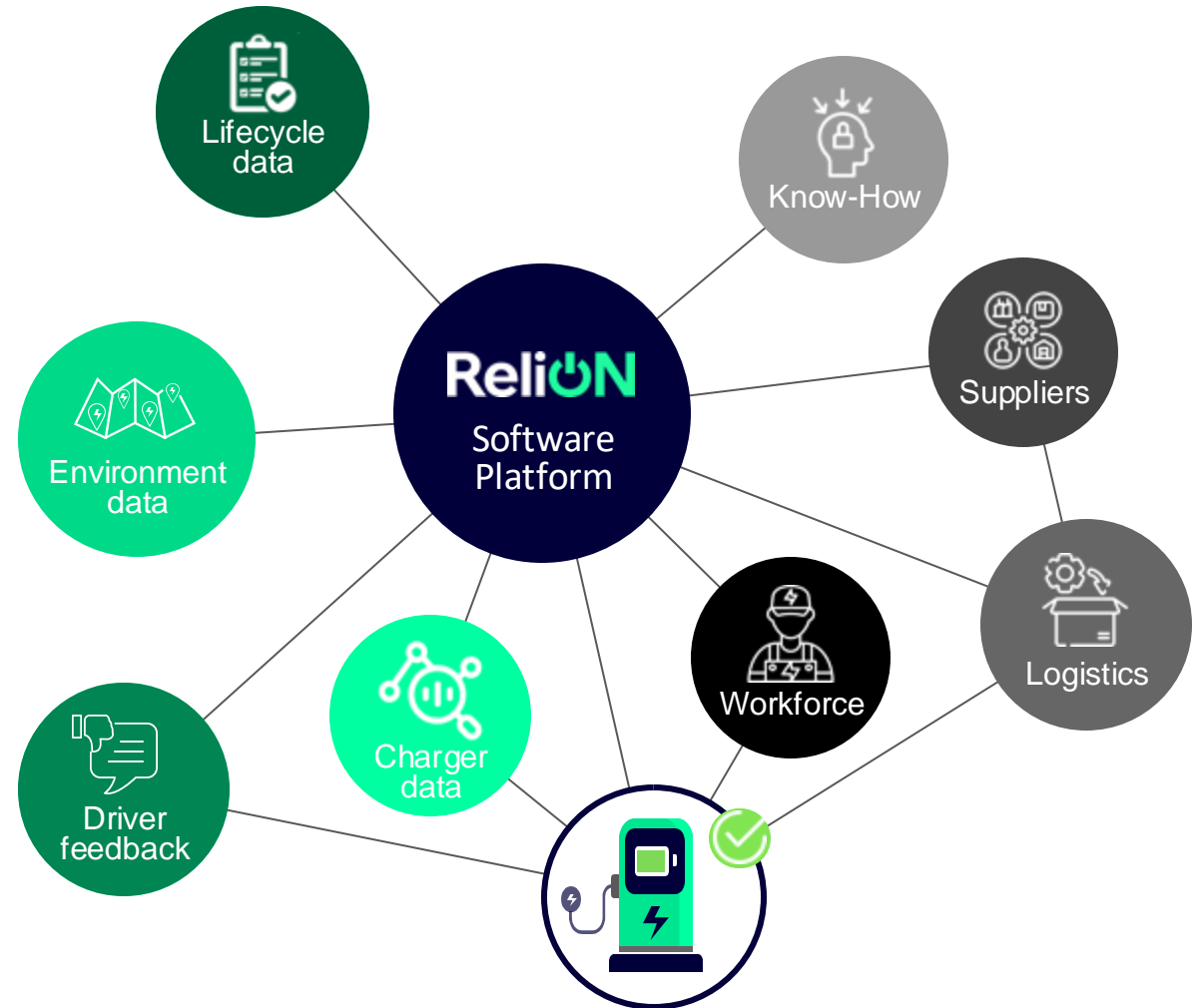


Challenges of EV charging infrastructure O&M

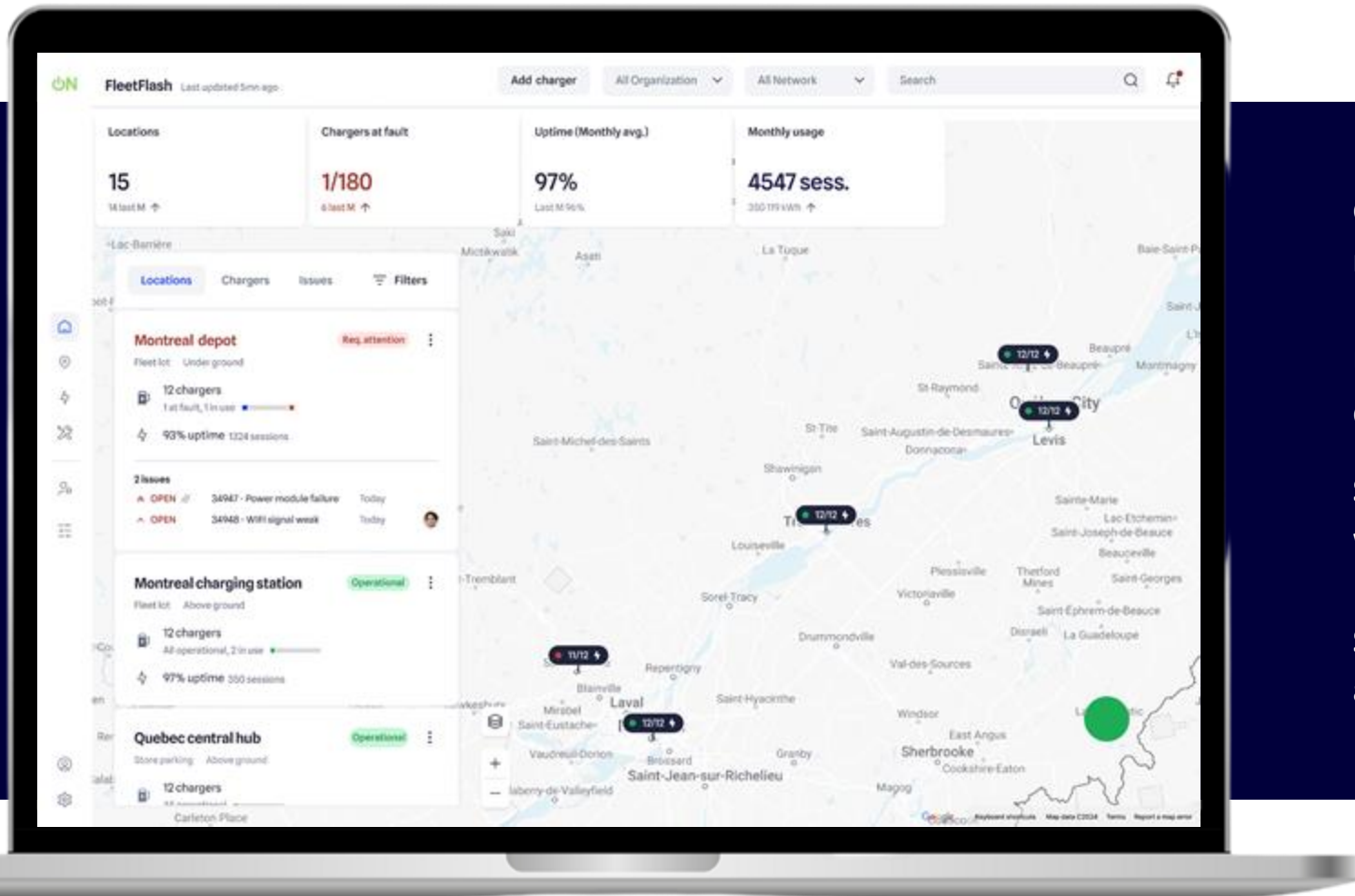


Connecting the dots to keep EV chargers charging.

ReliON is your **end-to-end** EV charging infrastructure **O&M solution**, providing **integrated experience** from **problem detection to resolution**.



One system to centralize EV charging operations.



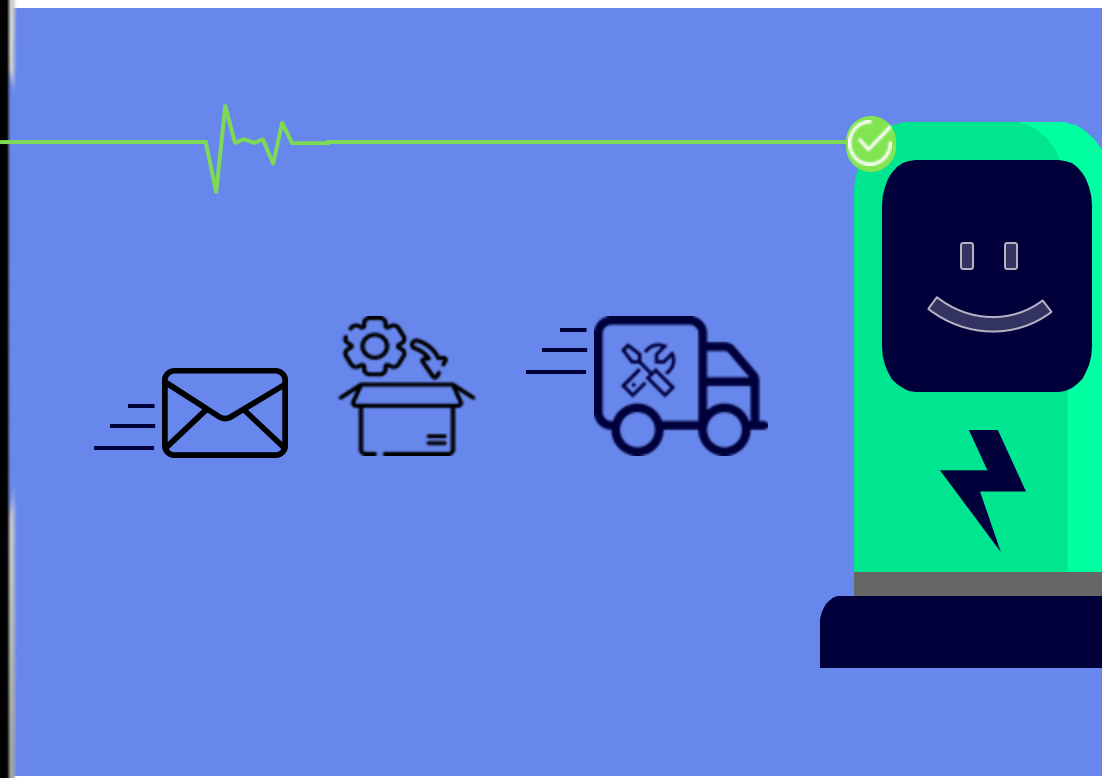
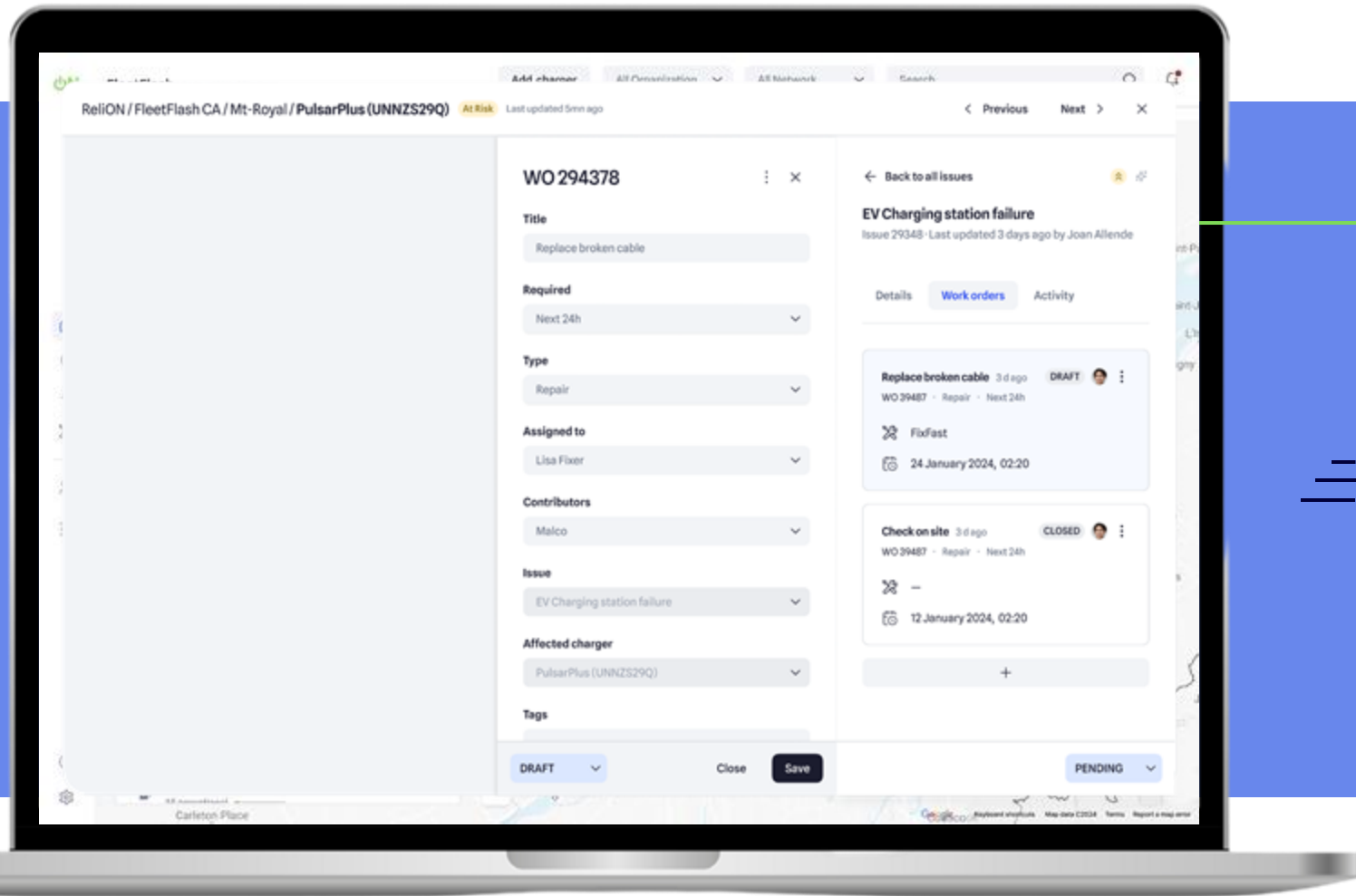
Gain full visibility and control over your charging network's operations.

Use one platform to manage equipment from different vendors.

Structure and automate issue resolution workflows.

Strengthen collaboration and achieve clear accountability.

Integrate with the supply chain for seamless dispatch.



Deploying EV chargers?

There's more to consider than charger specs, grid capacity, installation, and the user app.

Vet your equipment vendor - Beyond the name and promised performance.

- **Warranty & Parts:** Assess coverage, availability, and reliability.
- **Support Structure:** Evaluate team expertise, partner network, training, and documentation.
- **Dependability:** Understand how reliant your operations are on the vendor.
- **Interoperability:** Industry standards exist for a reason!

Cost considerations - Plan for downstream expenses Now.

- **Technological choices:** These can significantly impact operational costs.
- **Package:** Combine service, software, and equipment to leverage incentives and financing programs.

Operations & Maintenance - Don't wait until there's water in the basement.

- **Ultimately, the success of your project hinges on achieving operational excellence.**



Reli**ON**

Powering electric mobility with infrastructure we can rely on.



Benoit Lacroix, CEO

blacroix@relioncharging.com

+1-514-975-3045

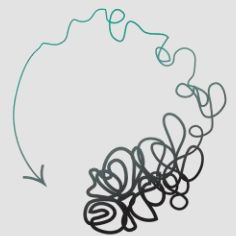
<https://www.linkedin.com/in/blacroix27/>



Municipal Pilot Programs – light and medium duty EV adoption

Feb 2025

Ashley Smith, B.Sc., M.Eng., LEED AP
Owner + Managing Director
Fundamental Inc.



fundamental
inc

WELCOME



CLIMATE ACTION CONSULTING

- 🌀 **Climate Action Plans (Mitigation and Adaptation)** - storm water, wastewater, urban climate, wildlife biology, connectivity and transportation, integrated renewable energy, carbon management planning
- 🌀 **GHG Emissions Inventory, Quantification – ISO 14064**
- 🌀 **Housing - Zero Carbon & Affordable Services**
- 🌀 **Proposal Application Writing and support services**
- 🌀 **Eco-Asset Management** – strategic integration of climate-conscious metrics into traditional asset management and financial management frameworks



This company is part of the global movement for an inclusive, equitable, and regenerative economic system.



Ashley Smith
PVA-042523-015079
Emma Power
PVA-122222-014788
Geoff Stevens
PVA-122122-014760

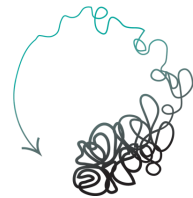
Municipal -
Light Duty
EV Pilot



FEDERATION OF CANADIAN MUNICIPALITIES
FÉDÉRATION CANADIENNE DES MUNICIPALITÉS



GREEN MUNICIPAL FUND
FONDS MUNICIPAL VERT



fundamental
inc



Portugal Gove
St. Philip's



newfoundland labrador
hydro





January 16, 2024

Town of Portugal Cove – St. Philip's Drives Towards Zero-Carbon

Town of Portugal Cove – St. Philip's Drives Towards Zero-Carbon

Portugal Cove – St. Philip's, NL – In a move towards sustainable practices and environmental stewardship, the Town of Portugal Cove – St. Philip's proud to announce the integration of six new electric vehicles (EVs) and six new charging stations into its municipal fleet. One of several initiatives from the Town's Climate Change Adaptation and Mitigation plans, this initiative marks a pivotal step forward in the Town's commitment to reducing carbon emissions and fostering eco-friendly operations.

Share



TOTAL PROJECT COST: \$456,800

FCM GMF – 80% funding

Town – 16% cash, 4% in-kind

NL Hydro – additional project contribution,
EV charger installation rebate of 50%

GovNL + GovCan – Electric vehicle rebates

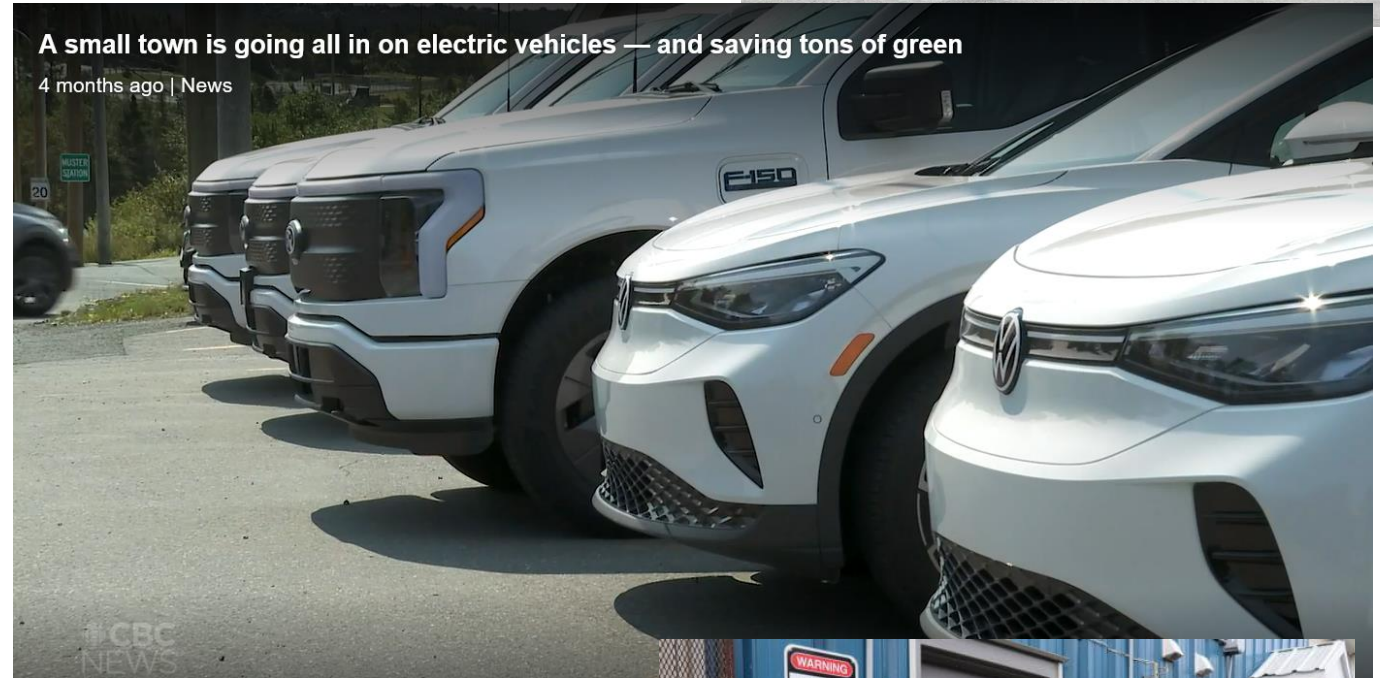
Qty: 4 - Pick Up Trucks

Qty: 2 - medium SUVs

Qty: 6 - level 2 EV chargers

Estimated fuel savings – at least \$5,500/year

Estimated GHG savings – 25 tCO₂e per yr



FCM
FEDERATION
OF CANADIAN
MUNICIPALITIES

FÉDÉRATION
CANADIENNE DES
MUNICIPALITÉS


Portugal Gove
St. Philip's

 fundamental
inc

Electric Vehicles (EVs) in PCSP! Public
Survey, Fall 2024



95 Responses

Responses were very mixed

It is clear there are still common
misconceptions about lifecycle carbon vs.
operational carbon

Many were unhappy with the timing of the
survey, wanting to have been consulted
before the Town even applied for dollars.

Many were thrilled that the Town was trying
out a 'new' technology for what amounted to
a very low expenditure of tax dollars.

Additional community engagement will be
held again in Spring 2025 with information
responding directly to questions/comments
from the survey.

Municipal –
Medium Duty
EV Pilot



PHASE 1

Pre-Procurement Research

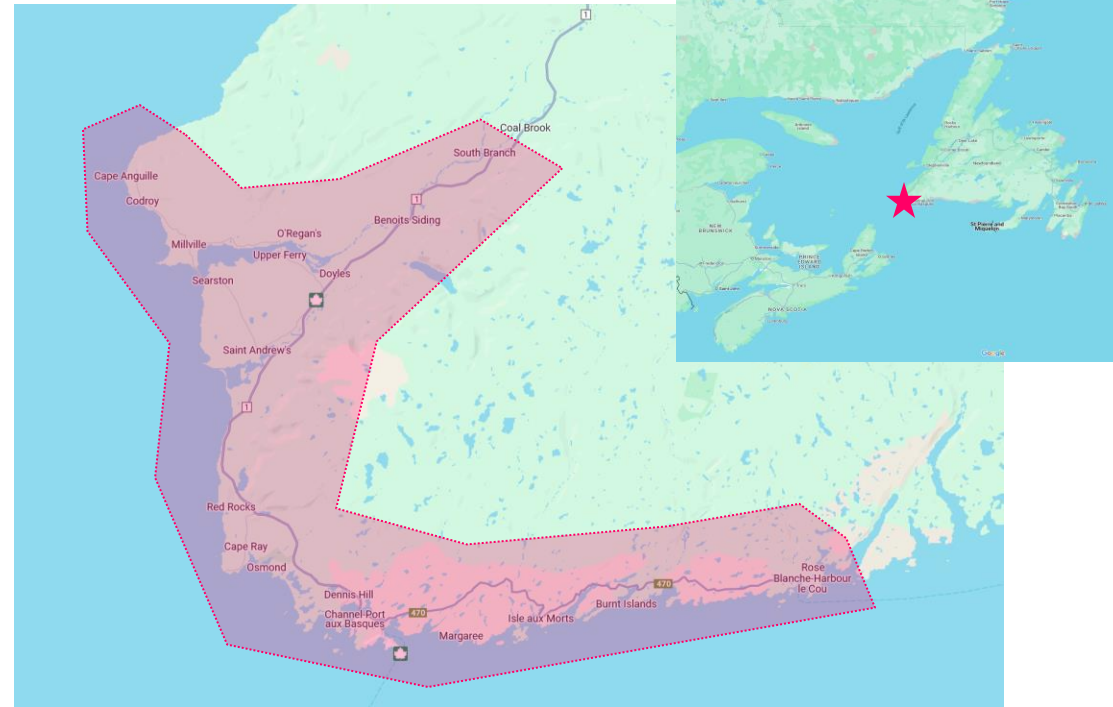
- Connect with all manufacturers of the truck chassis suitable for a refuse collection service body
- Discuss cost, delivery, operations + maintenance
- Identify other opportunities for electric truck chassis applications in NL
- Summarize outcomes

DECISION GATE

PHASE 2

Implementation

- Purchase vehicle and deliver pilot for waste collection regional service



Municipal
Full Fleet
EV Feasibility



FEDERATION OF CANADIAN MUNICIPALITIES
FÉDÉRATION CANADIENNE DES MUNICIPALITÉS



GREEN MUNICIPAL FUND
FONDS MUNICIPAL VERT



PHASE 1

Inventory and Analysis

- Calculate emissions and operational cost savings for existing vs electric vehicles
- Calculate life cycle costs of carbon and dollars
- Assess availability and market readiness for medium and heavy duty electric vehicles

PHASE 2

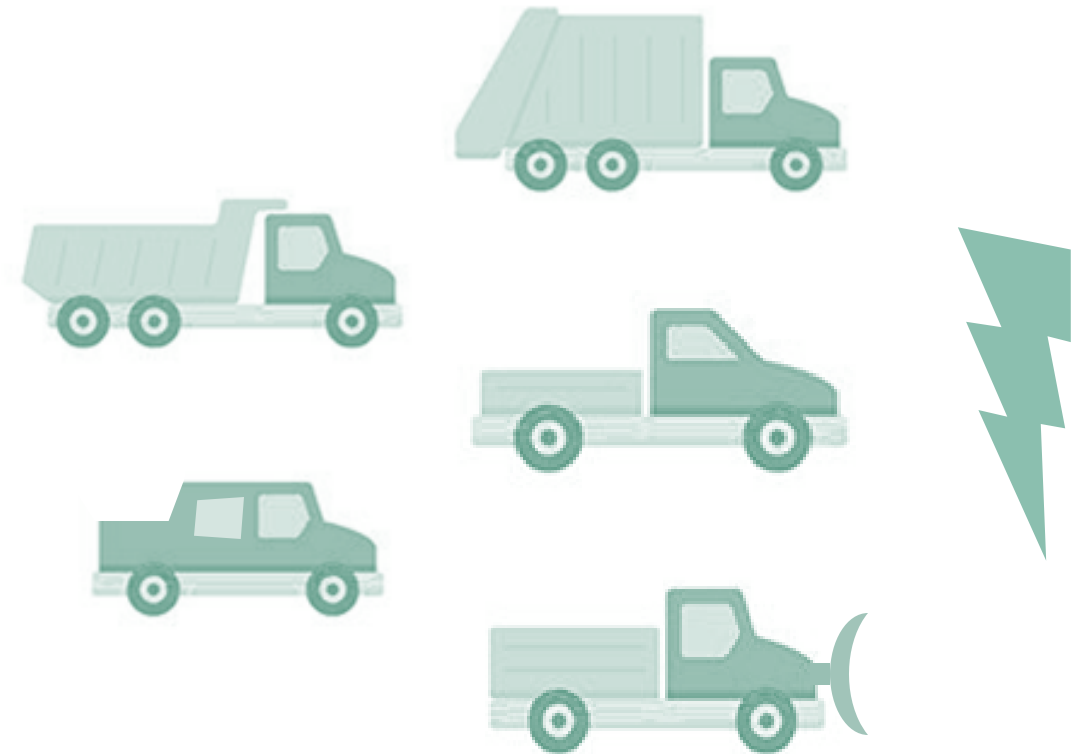
Public Engagement and Outreach

- Survey and public information session

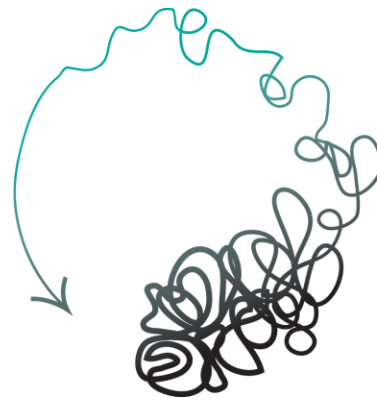
PHASE 3

Strategic Roadmap

- Based on outcomes of Phases 1 and 2, develop an implementation roadmap for the conversion of all municipal fleet vehicles



Thank you! Questions?



fundamental
inc

www.fundamentalinc.ca



CONTACT

ashley@fundamentalinc.ca

c. 709-330-4723

**Saint John Transit
FLEX Service.**

**Saint John Transit
Service FLEX.**



**SAINT JOHN
TRANSIT**

Donna Noade Reardon

Mayor | Mairesse

June 2024



SAINT JOHN

CITY OF SAINT JOHN | VILLE DE SAINT JOHN

About Saint John Transit.

À propos du Saint John Transit.





FLEX Service Goals.

Objectifs du service FLEX.





**Implementation
of on-demand
FLEX Service.**

**Implémentation
du service FLEX
à la demande.**





Timeline.

Chronologie.





**Small city,
big outcomes.**

**Petite ville,
grand résultats.**



Q&A

Ask your question on
Slido!

[https://app.sli.do/event/dp59xf9A
RJ3nKwZ5sgDUxM](https://app.sli.do/event/dp59xf9ARJ3nKwZ5sgDUxM)

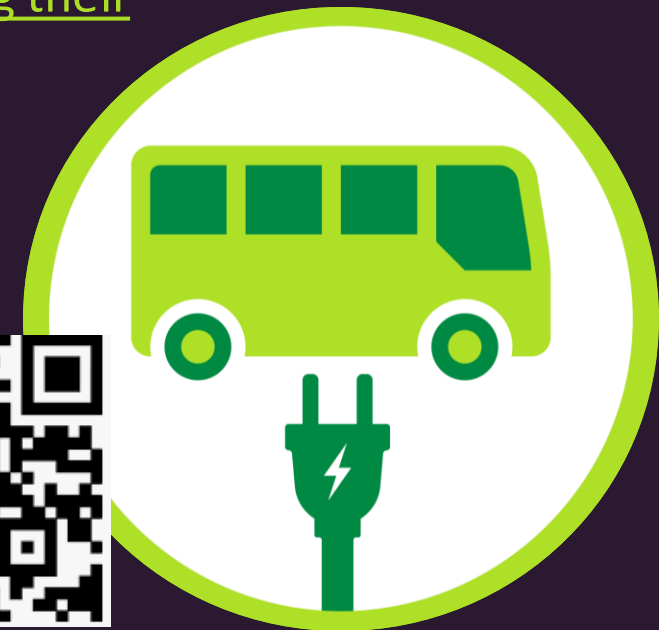


Learn more

Building on the learning today, here are a few resources for you

- [GMF Funding: Municipal Fleet Electrification](#)
- [GMF Webinar recording: Expert advice on electric vehicles for municipalities](#)
- [GMF Article series: How communities across Canada are electrifying their municipal fleets](#)
- Resources to support [Net-Zero Transformation](#)

All slide decks, worksheets and links are available to participants at bit.ly/scc-learning



Share your feedback

Please take out your phone

